

# ENGLISH

In English, students will continue to develop their writing skills by composing their own imaginative and informative texts. During writing lessons, students will be focusing on composing effective simple and compound sentences. They will also strengthen their accuracy when using time connectives, punctuation and similes in their writing. Throughout the term, students will be engaging with quality literature and identifying the purposes of fiction and non-fiction texts that they read and view. To develop their understanding of texts, students will be predicting, summarising events and key ideas, making connections and inferring meaning. Students will continue to broaden their phonics knowledge and independent reading skills through daily practise. In addition to this, students will have various opportunities to enhance their speaking and listening skills.



# YEAR 2 2022 TERM 2 OVERVIEW

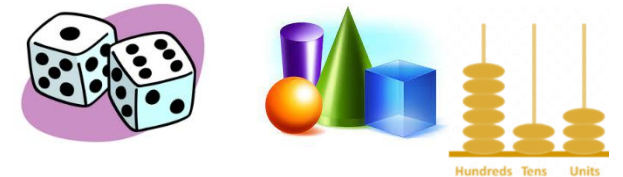
## PDHPE

Students will be identifying ways to maintain their own personal safety and will practise a range of strategies to respond to various situations. Each week, students will participate in sport and fitness sessions that allow for the practise of fundamental movement skills, such as jumping, running, hopping and catching. Students will play games that incorporate such movement skills and promote team work.



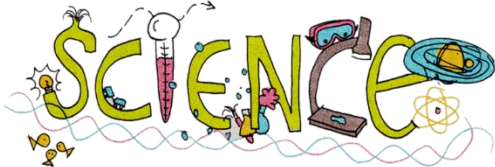
# MATHEMATICS

In mathematics this term there will continue to be a strong focus on strengthening number skills. Students will be consolidating their understanding of place value, when working with two- and three-digit numbers. Concrete materials, number lines and number facts will be used to solve simple addition, subtraction, multiplication and division problems. Students will also be exploring the concept of chance by describing and comparing the outcome of events. During the term, students will develop their understanding of geometry concepts, by sorting, identifying and describing common 3D objects. They will also explore how to measure area using informal units, such as blocks.



# SCIENCE & TECHNOLOGY

Students will be exploring the Living World strand this term. They will investigate how plants and animals are used to satisfy our need for food and fibre. Through scientific investigations they will explore how technology allows the sustainable growth of plants and animals to produce fibre for clothing and shelter.



# CREATIVE ARTS

This term students will be developing their skills in visual arts, through making and appreciating artworks. Students will explore the use of colour, shapes and lines when making their own artworks and when viewing the work of famous artists. By appreciating the art of Australian and international artists students will make connections, describing similarities, differences and their own personal opinions.



# HSIE - HISTORY

This term students will explore the topic 'Past and Present Family Life', providing opportunities to identify differences in family structures today and in the past. Students will analyse sources to compare family roles in the past and the present and will develop their understanding of continuity and change.

